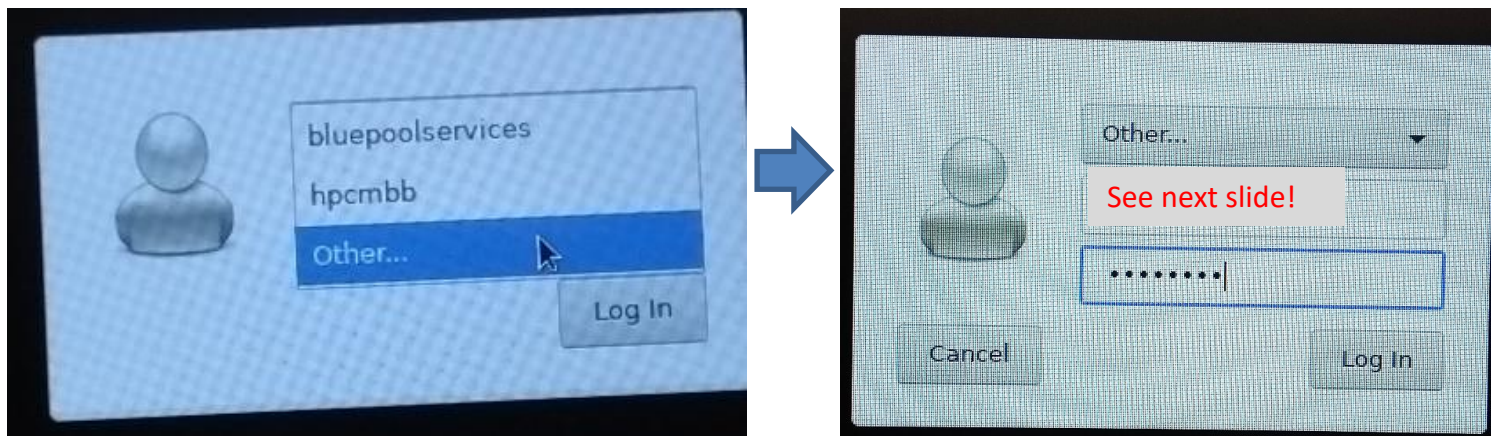


## Linux boot in Rühle Saal

- Start laptop (shut it down first if you see the Windows boot)
- Press **F12** on your keyboard
- Linux will start, **default is correct (no need to type or click anything): please be patient**



- Choose "Other...", then type in your **username**, then **pw (see next slide)**
- Click "Log In"
- **Please log in again** if the desktop does not respond correctly:  
Press once shortly **power** and choose **Restart**.  
Then log in again.

## Login information and password for laptops

- Laptop

User	hlrskn<NO>*
pw	See whiteboard

\*<NO> = Number: See sticker on laptop

- Keyboard

These laptops have a **German keyboard**.

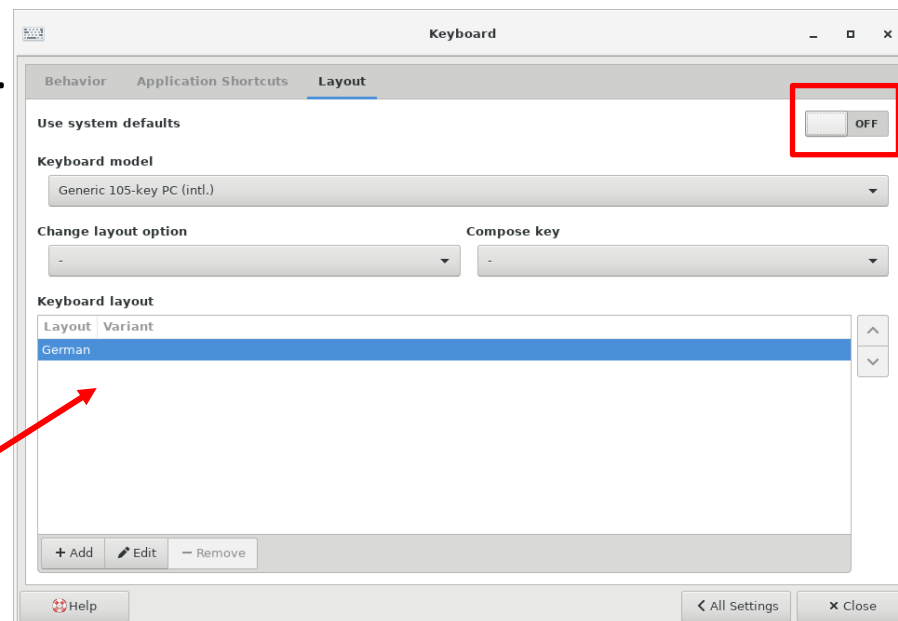
If you would like to

**switch input method**, please choose:

Applications (*top-left menu bar*) → Settings →

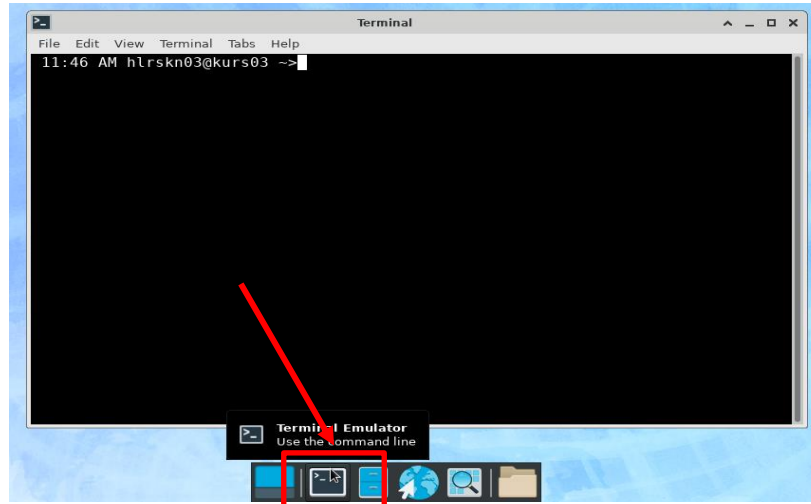
Keyboard → Layout

- Use system defaults: turn **OFF**
- Add** or **edit** the input language and **remove** any others from the list



## Cluster login

- Open a terminal:



- Type:

```
$ ssh username@training.hlrs.de
```

Your access

```
username: sca515<NO>*
```

\*<NO> = Number: See sticker on laptop

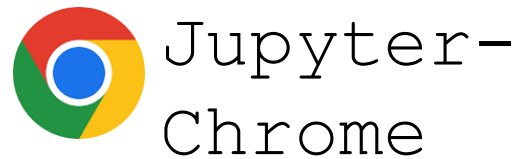
- Answer the following questions by typing:

```
Are you sure you want to continue connecting (yes/no/[fingerprint])?
```

**Yes**

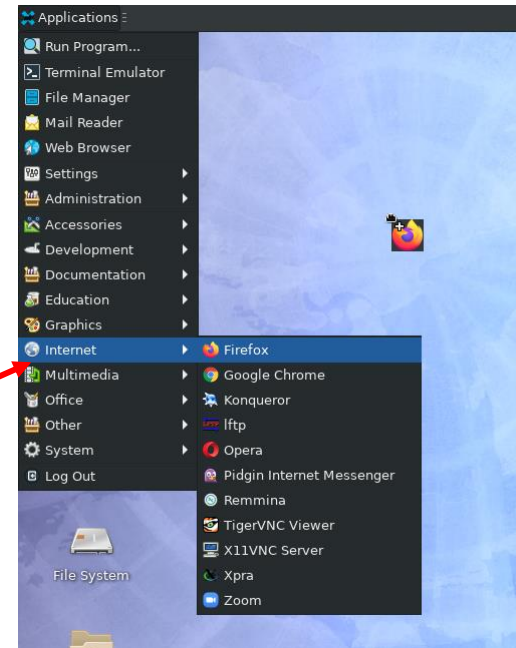
## Further information

- **Browser for the Jupyter Notebooks:**



**DO NOT** use it as an Internet browser.

Use e.g. **Firefox** instead



- **Website with all the course material:**

<https://fs.hlrs.de/projects/par/events/2024/dl-hlrs/>