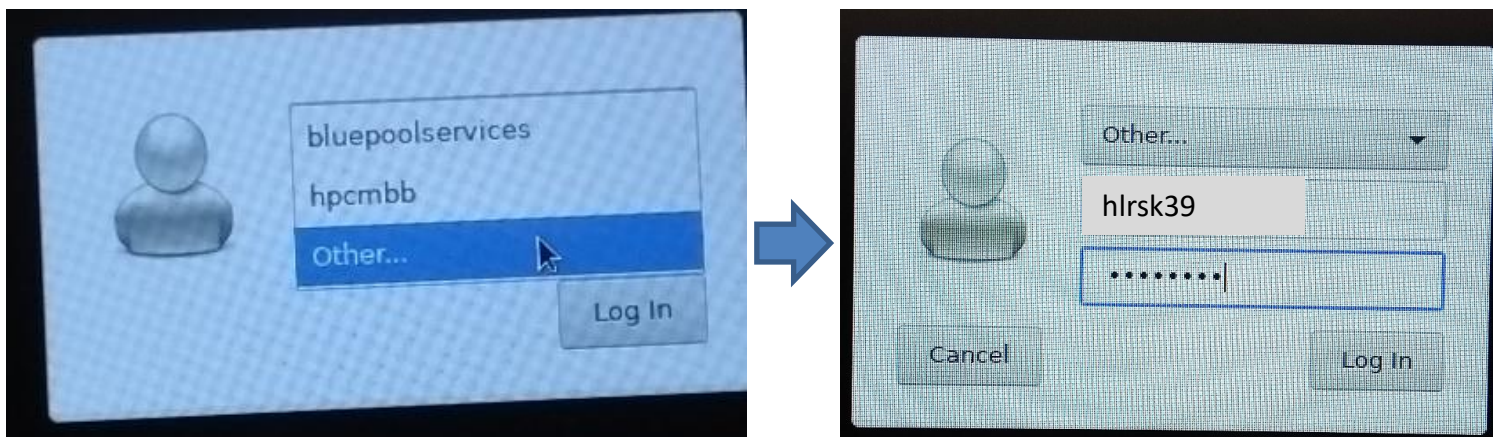


## Linux boot in Rühle Saal

- Start laptop (shut it down first if you see the Windows boot)
- **Press repeatedly F12** until you can see "Entering boot" down left
- Linux will start, **default is correct (no need to type or click further): please be patient**



- Choose "Other...", then type in your **username**, then **pw (see next slide)**
- Click "Log In"
- Please **log in again** if the desktop does not respond:  
Type **Ctrl+Alt+Entf** and choose **Log out**.  
Then log in again.

## Login information and password for laptops

- Laptop

User	hlrsk<NO>*
pw	See whiteboard

\*<NO> = Number: See sticker on laptop

- Keyboard

These laptops have a **German keyboard**.

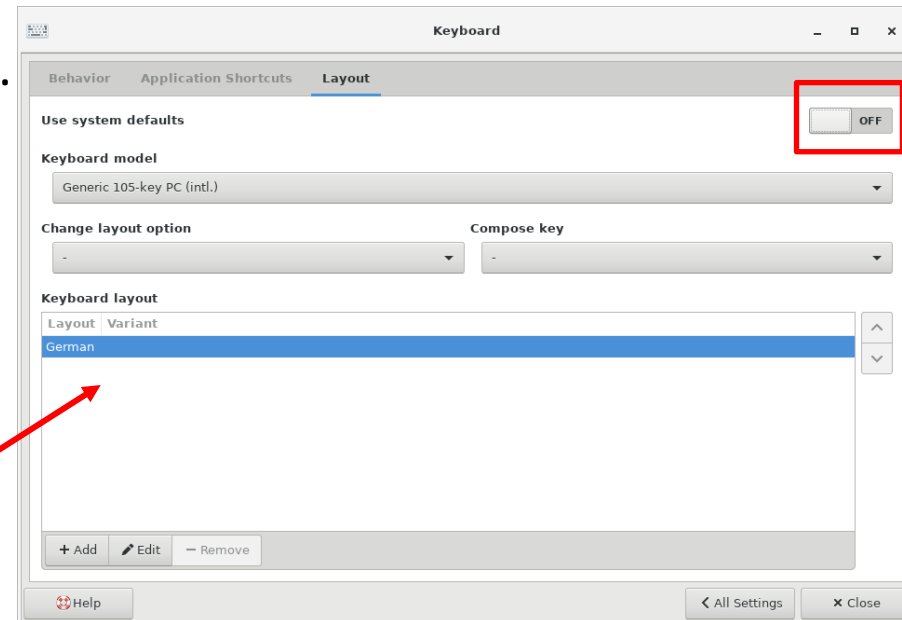
If you would like to

**switch input method**, please choose:

Applications (*top-left menu bar*) → Settings →

Keyboard → Layout

- Use system defaults: turn **OFF**
- Add** or **edit** the input language and **remove** any others from the list



## Login information and password for laptops

- Vulcan cluster**

Open a new **command window** and login with your username and password:

```
ssh vulcan.hww.hlrs.de
```

If you get a prompt on `cl1fr[3-4]`, everything is ready.



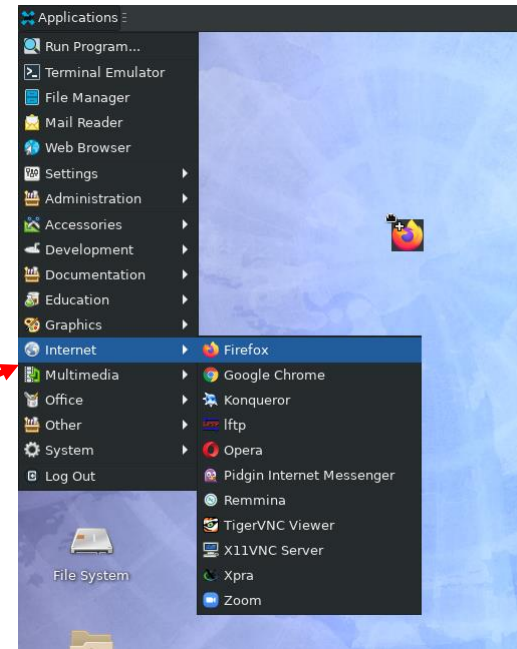
- Browser for the Jupyter Notebooks:**

**DO NOT** use it as an Internet browser.



Jupyter-Chrome

Use e.g. **Firefox** instead.



- Website with all the course material:**

<https://fs.hlrs.de/projects/par/events/2023/sst/>